

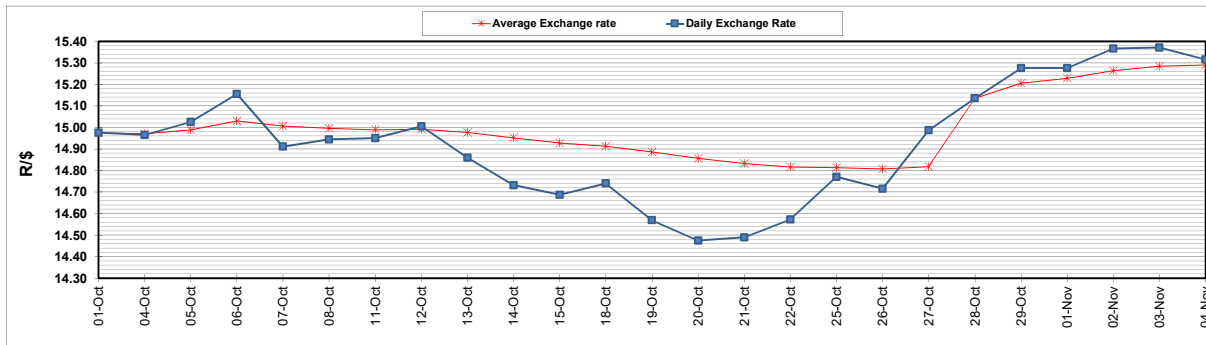
	PETROL 95 ULP	PETROL 93 ULP & LRP	DIESEL 0.05%	DIESEL 0.005%	ILL. PAR.
GAUTENG PUMP PRICE (SA c/l) AS FROM 03/11/2021	1,954.000	1,932.000	-	-	-
WHOLESALE PRICE (SA c/l) AS FROM 03/11/2021	-	-	1,719.980	1,723.380	1,125.488
SINGLE NATIONAL MAXIMUM RETAIL PRICE	-	-	-	-	1,433.000
BASIC FUEL PRICE - 04/11/2021 (SA c/l)	978.350	956.429	932.348	937.952	928.223
PRESS RELEASE CONTRIBUTION TO BFP 03/11/2021 - 04/11/2021 (SA c/l)	937.110	925.110	917.630	921.030	912.128
UNIT OVER/(UNDER) RECOVERY - 04/11/2021 (SA c/l)	(41.240)	(31.319)	(14.718)	(16.922)	(16.095)
AVERAGE BASIC FUEL PRICE 28/10/2021 - 04/11/2021	990.560	968.266	935.918	942.045	932.015
AVERAGE UNIT OVER/(UNDER) RECOVERY 28/10/2021 - 04/11/2021	(132.649)	(122.357)	(115.622)	(118.347)	(116.554)

ANALYSIS MOVEMENT OF AVERAGE OVER/(UNDER) RECOVERY

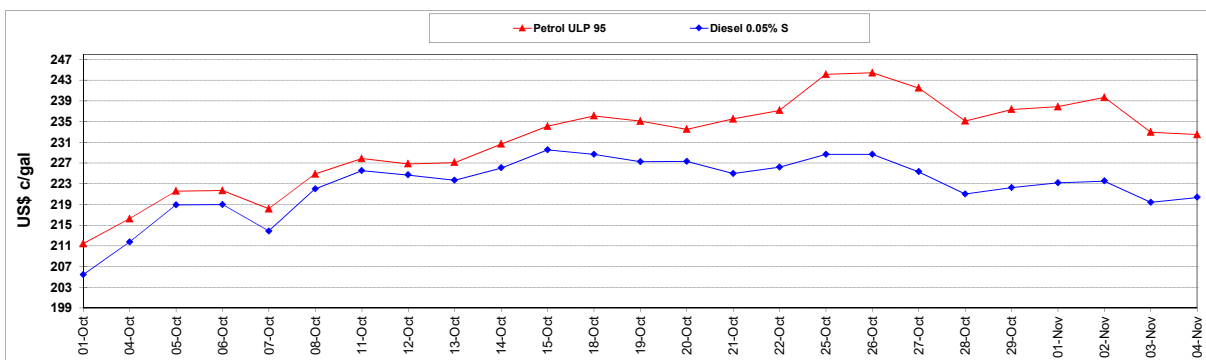
	PETROL 95	PETROL 93	DIESEL 0.05%	DIESEL 0.005%	ILL. PAR.
- MOVEMENT IN INTERNATIONAL PRODUCT PRICES	(102.052)	(92.446)	(86.711)	(89.248)	(87.764)
- MOVEMENT IN EXCHANGE RATE	(30.598)	(29.910)	(28.910)	(29.100)	(28.790)
AVERAGE UNIT OVER/(UNDER) RECOVERY 28/10/2021 - 04/11/2021	(132.649)	(122.357)	(115.622)	(118.347)	(116.554)

R/\$ EXCHANGE RATE - (R/\$15.3160 - 04/11/2021)

EXCHANGE RATE USED IN BASIC FUEL PRICE



INTERNATIONAL PRODUCT PRICES OF BASKET USED IN BASIC FUEL PRICE



BASIC FUEL PRICE IN SA CENTS PER LITRE

